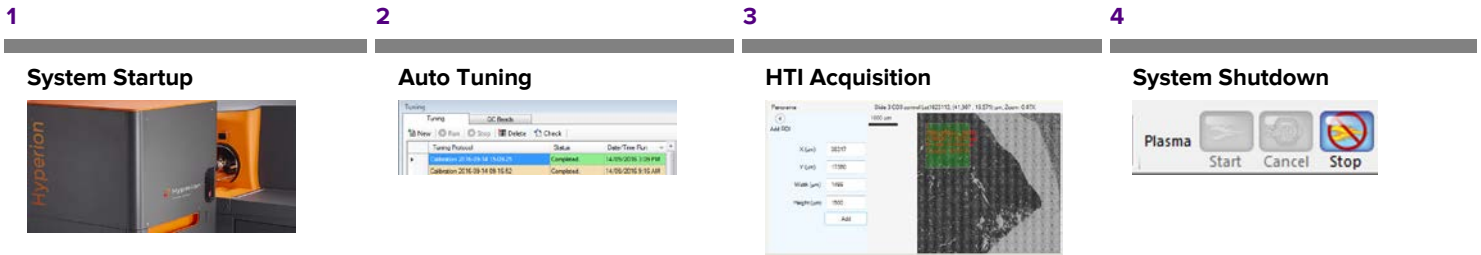


Hyperion Imaging System

NOTE Please review the Hyperion Imaging System User Guide prior to the use of this Quick Reference Card for reference.

System Operation CyTOF Software v6.7



System Start Up

CyTOF Software Toolbar



- ❑ 1 Click **Plasma Start** on toolbar and then allow the system to warm up (approximately 15 minutes).

Auto Tuning

- ❑ 1 Click **Camera** and click **Start Video** in the Camera window.
- ❑ 2 Click HTI Sample Unload, insert the tuning slide, and then click **Load**.
- ❑ 3 After Flushing is complete, click **Laser Start**.

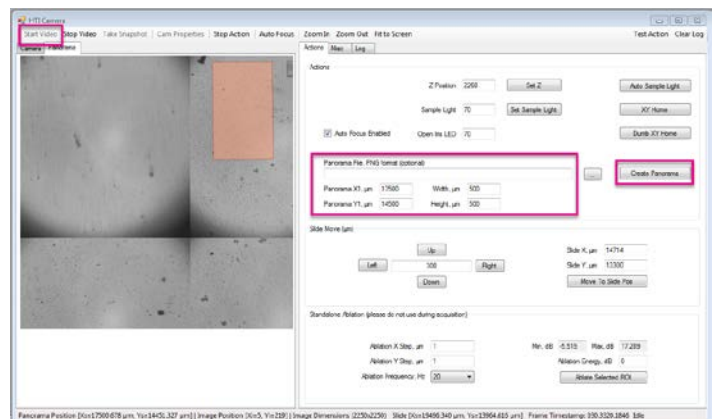
NOTE Current/Gases may be optimized weekly.

- If this is the first tuning after switchover from suspension mode, check all boxes and perform a full tuning.

- ❑ 5 When tuning is complete, check the **Results** tab to ensure that Lu(175) Mean Duals are >500.

HTI Camera Window

- ❑ 1 In the Actions tab, enter Panorama X1/Y1 coordinates and dimensions (width and height). Click **Create Panorama**.
- ❑ 2 When the panorama has been created, select the **Panorama** tab. Use the mouse to draw a rectangle 100 μm wide (X) and 500 μm tall (Y). Refer to the Log tab for the dimensions.
- ❑ 3 In the Toolbar, click **Tuning**. In the **Tuning** window, click **New**.
- ❑ 4 In the General tab check **Enable QC report** and **Enable Transients Calibration**. Click **Start**.



HTI Acquisition

Create Panorama

- 1 Click **Unload** to remove the tuning slide. Insert the sample slide and click **Load**.
- 2 After flushing, click **Laser Start**.
- 3 Open **HTI Acquisition** and from the Menu select **File > New**. Click Browse, navigate to desired file location and enter a file name. From the **Slide** drop-down, select the slide dimensions (Default 75,000 x 25,000). Click **Save**.

HTI Acquisition

- 1 Right-click the Slide Image white space and select **Set Image**. Browse to find the whole slide image file and click **Apply Selection**.
- 2 Enter panorama coordinates X1, Y1 (top left) and dimensions. Click **Add**, then click **Create**.

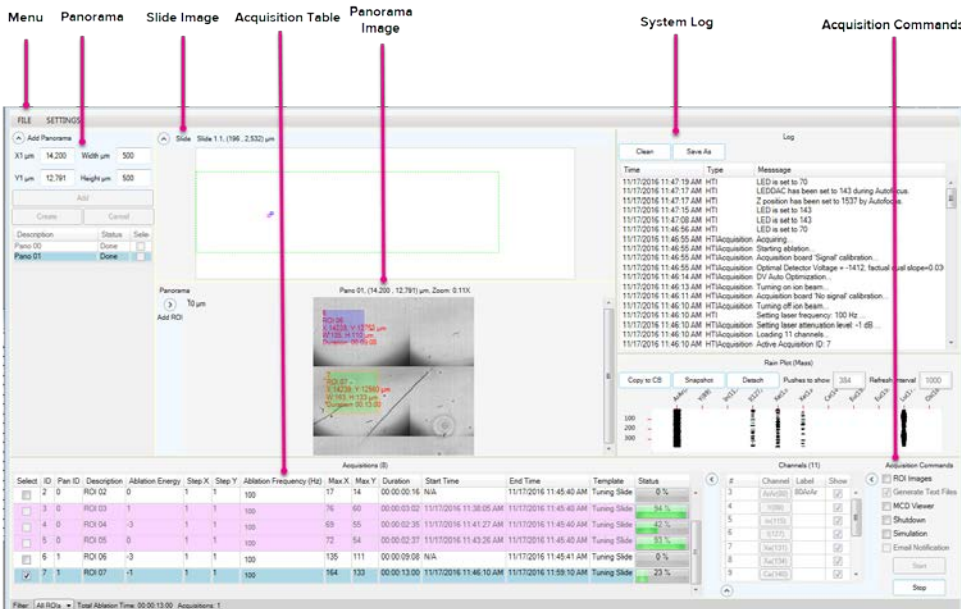
Add Regions of Interests (ROIs)

- 1 Select a panorama, then draw rectangles on the panorama image to define regions of interest (ROIs).
- 2 Highlight ROIs in the Acquisition table. Right click and select **Apply Template** to choose the appropriate template from the menu. Ablation energy and ablation frequency can also be adjusted via the right-click menu.
- 3 In the Acquisition Commands on the lower right-hand corner of the window, check **Generate Text Files** and any other desired options.
- 4 Click **Start** in the lower right corner to begin acquisition.

Shut Down the Instrument

IMPORTANT Leave the argon supply on during shutdown if you plan to restart the Helios™ instrument immediately.

- 1 Click Unload to remove your sample slide. The laser stops automatically.
- 2 In the Toolbar, click **Load** to retract the stage.
- 3 Click Plasma Stop to initiate the plasma stop sequence.
- 4 Once the plasma shutdown is complete, close the software.



For technical support visit fluidigm.com/support.

North America +1 650 266 6100 | Toll-free (US/CAN): 866 358 4354 | support.northamerica@fluidigm.com

Europe/Middle East/Africa/Russia +44 1223 598100 | support.europe@fluidigm.com

Latin America +1 650 266 6100 | techsupportlatam@fluidigm.com

Japan +81 3 3662 2150 | techsupportjapan@fluidigm.com

China (excluding Hong Kong) +86 21 3255 8368 | techsupportchina@fluidigm.com

All other Asian countries/India/Australia +1 650 266 6100 | techsupportasia@fluidigm.com

For Research Use Only. Not for use in diagnostic procedures.

Information in this publication is subject to change without notice. **Patent and license information:** fluidigm.com/legalnotices. Fluidigm, the Fluidigm logo, and Hyperion are trademarks and/or registered trademarks of Fluidigm Corporation in the United States and/or other countries. All other trademarks are the sole property of their respective owners. © 2018 Fluidigm Corporation. All rights reserved. 09/2018