

## Anti-p-PLCgamma2 [pY759] -162Dy

**Catalog #:** 3162018A

**Package Size:** 50 tests

**Storage:** Store product at 4°C. Do not freeze.

**Cross Reactivity:** Human, Predicted\*

**Clone:** K86-689.37

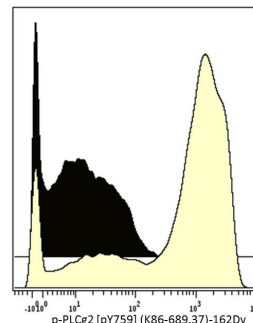
**Isotype:** Mouse IgG1

**Formulation:** Antibody stabilizer with 0.05% Sodium Azide

### Technical Information

**Validation:** Each lot of conjugated antibody is quality control tested by CyTOF® analysis of stained cells using the appropriate positive and negative cell staining and/or activation controls.

**Recommended Usage:** The suggested use is 1 µl for up to 3 X 10<sup>6</sup> live cells in 100 µl. It is recommended that the antibody be titrated for optimal performance for each of the desired applications.



Human Ramos B cells were incubated for 15 minutes in media alone (top) or with pervanadate (bottom). Cells were then fixed, permeabilized, and stained with 162Dy-anti-p-PLCγ2 [pY759] (K86-689.37).

### Description

A major signaling mediator downstream of receptor tyrosine kinase (RTK) pathways is phospholipase C (PLC), a family of cytoplasmic proteins that cleave phospholipids to activate the subsequent signal transduction pathways. Upon activation by RTKs or G protein-coupled receptors (GPCRs), PLC cleaves the phospholipid phosphatidylinositol 4,5-bisphosphate (PIP<sub>2</sub>) into diacyl glycerol (DAG) and inositol 1,4,5-trisphosphate (IP<sub>3</sub>), which activates the calcium-dependent protein kinase C (PKC) and Ca<sup>2+</sup> release from the endoplasmic reticulum (ER) to the cytoplasm. PKC and calcium spike in turn activate downstream effectors to mediate various cellular changes and activities. A total of 13 different PLC family members, divided into six classes, have been identified in humans, including β, γ, δ, ε, η, and ζ, and each has a specific tissue distribution. PLC-γ has two isoforms, PLC-γ1 and PLC-γ2. PLC-γ1 is expressed ubiquitously and has an essential role in growth and development, while PLC-γ2 is expressed mainly in hematopoietic cells and plays an essential role in B cell development and function.

### References

Bandura, D. R., et al. Mass Cytometry: Technique for Real Time Single Cell Multitarget Immunoassay Based on Inductively Coupled Plasma Time-of-Flight Mass Spectrometry. *Analytical Chemistry* 81:6813-6822, 2009.

Ornatsky, O. I., et al. Highly multiparametric analysis by mass cytometry. *J Immunol Methods* 361 (1-2):1-20, 2010.

### Contact Information:

Sales: [sales@DVSsciences.com](mailto:sales@DVSsciences.com) | Support: [support@DVSsciences.com](mailto:support@DVSsciences.com)  
[www.DVSsciences.com](http://www.DVSsciences.com) | For assistance by phone: 855-DVS-CYTO

This product is intended for Research Use Only. This product is not intended for therapeutic or diagnostic purposes in humans or animals.

© 2011 DVS Sciences Inc. The trademarks mentioned herein are the property of DVS Sciences Inc. or their respective owners. DVS Sciences Inc. products are warranted to meet stated product specifications and to conform to label descriptions when used and stored properly. Unless otherwise stated, this warranty is limited to 6 months from date of sales for products used, handled and stored according to DVS Sciences, Inc. instructions. DVS Sciences, Inc. sole liability for the product is limited to replacement of the product or refund of the purchase price. Product may not be resold, modified for resale or used to manufacture commercial products without prior written approval from DVS Sciences Inc.

