

# Anti-Mouse Ly-6G/C (Gr-1)-141Pr

Catalog: 3141005B

Package Size: 100 tests

Storage: Store product at 4°C. Do not freeze.

Reactivity: Mouse,

Clone: RB6-8C5

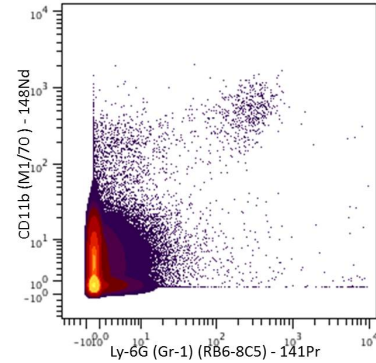
Isotype: IgG2b

Formulation: Antibody stabilizer with 0.05% Sodium Azide

## Technical Information

**Validation:** Each lot of conjugated antibody is quality control tested by CyTOF® analysis of stained cells using the appropriate positive and negative cell staining and/or activation controls.

**Recommended Usage:** The suggested use is 1 µl for up to 3 X 10<sup>6</sup> live cells in 100 µl. It is recommended that the antibody be titrated for optimal performance for each of the desired applications.



Mouse splenocytes stained with 141Pr-anti-Ly-6G/C (RB6-8C5) and 148Nd-anti-CD11b(M1/70). Total viable cells are displayed in the analysis.

## Description

Ly-6G/C, also known as the myeloid differentiation antigen Gr-1, is a GPI-linked protein. Ly-6G/C is expressed by the myeloid lineage in a developmentally regulated manner in the bone marrow. While monocytes only express Ly-6G/C transiently during their bone marrow development, expression on bone marrow granulocytes and peripheral neutrophils is a good marker for these populations. Blocking studies with Ly-6C (clone HK1.4) or RB6-8C5 show no effect against staining with the other clone thereby suggesting that RB6-8C5 does not recognize Ly-6C in resting bone marrow or splenocytes.

## References

Bandura, D. R., et al. Mass Cytometry: Technique for Real Time Single Cell Multitarget Immunoassay Based on Inductively Coupled Plasma Time-of-Flight Mass Spectrometry. *Analytical Chemistry* 81:6813-6822, 2009.

Ornatsky, O. I., et al. **Highly Multiparametric Analysis by Mass Cytometry.** *J Immunol Methods* 361 (1-2):1-20, 2010.

### For technical support visit [fluidigm.com/support](http://fluidigm.com/support)

**North America** +1 650 266 6100 | Toll-free: +1 866 358 4354 in the US | [support.northamerica@fluidigm.com](mailto:support.northamerica@fluidigm.com) **Europe** +33 1 60 92 42 40 | [support.europe@fluidigm.com](mailto:support.europe@fluidigm.com)

**China (excluding Hong Kong)** +86 21 3255 8368 | [techsupportchina@fluidigm.com](mailto:techsupportchina@fluidigm.com) **Japan** +81 3 3662 2150 | [techsupportjapan@fluidigm.com](mailto:techsupportjapan@fluidigm.com)

**All other Asian countries** +1 650 266 6100 | [techsupportasia@fluidigm.com](mailto:techsupportasia@fluidigm.com) **Central and South America** +1 650 266 6100 | [techsupportlatam@fluidigm.com](mailto:techsupportlatam@fluidigm.com)

### For Research Use Only. Not for use in diagnostic procedures.

This product contains antibodies supplied by eBioscience

Information in this publication is subject to change without notice. **Safety data sheet information** [fluidigm.com/sds](http://fluidigm.com/sds) **Patent and license information** [fluidigm.com/legalnotices](http://fluidigm.com/legalnotices) | Fluidigm, the Fluidigm logo, and CyTOF are trademarks or registered trademarks of Fluidigm Corporation in the United States and/or other countries. © 2015 Fluidigm Corporation. All rights reserved. 07/2015