

## Anti-Mouse CD326[EpCAM]-166Er

**Catalog #:** 3166014B

**Package Size:** 100 tests

**Storage:** Store product at 4°C. Do not freeze.

**Cross Reactivity:** Mouse

**Clone:** G8.8

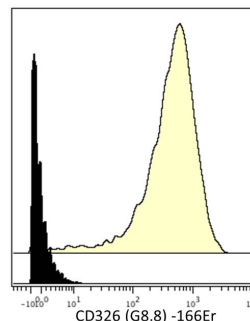
**Isotype:** Rat IgG2a

**Formulation:** Antibody stabilizer with 0.05% Sodium Azide

### Technical Information

**Validation:** Each lot of conjugated antibody is quality control tested by CyTOF<sup>®</sup> analysis of stained cells using the appropriate positive and negative cell staining and/or activation controls.

**Recommended Usage:** The suggested use is 1 µl for up to  $3 \times 10^6$  live cells in 100 µl. It is recommended that the antibody be titrated for optimal performance for each of the desired applications.



Mouse TE-71 (top) or Chinese Hamster Ovary (CHO) (bottom) cells stained with 166Er-anti-CD326/EpCAM (G8.8). Total cells are displayed in the analysis.

### Description

EpCAM (CD326) is a transmembrane glycoprotein expressed in many developing epithelia and in some epithelia (e.g., intestinal epithelia) in adult animals. It has been suggested that EpCAM can promote intercellular adhesion through homophilic interactions but also can attenuate cadherin-mediated adhesion. EpCAM also has been studied intensively in the context of cancer, both because, as a tumor antigen, it may represent a suitable target for immunotherapy and because it may play a role in cancer pathogenesis. EpCAM expression correlates with tumor aggressiveness and poor prognosis and is linked to enhanced cancer cell migration, invasion, and metastasis. More recent studies have described a role for EpCAM in normal and cancer stem function.

### References

Bandura, D. R., et al. Mass Cytometry: Technique for Real Time Single Cell Multitarget Immunoassay Based on Inductively Coupled Plasma Time-of-Flight Mass Spectrometry. *Analytical Chemistry* 81:6813-6822, 2009.

Ornatsky, O. I., et al. Highly multiparametric analysis by mass cytometry. *J Immunol Methods* 361 (1-2):1-20, 2010.

### Contact Information:

Sales: [sales@DVSsciences.com](mailto:sales@DVSsciences.com) | Support: [support@DVSsciences.com](mailto:support@DVSsciences.com)  
[www.DVSsciences.com](http://www.DVSsciences.com) | For assistance by phone: 855-DVS-CYTO

This product is intended for Research Use Only. This product is not intended for therapeutic or diagnostic purposes in humans or animals.  
This product contains antibodies manufactured by and sold under license from BioLegend and licensees thereof.

© 2011 DVS Sciences Inc. The trademarks mentioned herein are the property of DVS Sciences Inc. or their respective owners. DVS Sciences Inc. products are warranted to meet stated product specifications and to conform to label descriptions when used and stored properly. Unless otherwise stated, this warranty is limited to 6 months from date of sale for products used, handled and stored according to DVS Sciences, Inc. instructions. DVS Sciences, Inc. sole liability for the product is limited to replacement of the product or refund of the purchase price. Product may not be resold, modified for resale or used to manufacture commercial products without prior written approval from DVS Sciences Inc.

