

# Anti-Human NPY1R-159Tb

Catalog: 3159025B

Package Size: 100 tests

Storage: Store product at 4°C. Do not freeze.

Reactivity: Human,

Clone: 556153

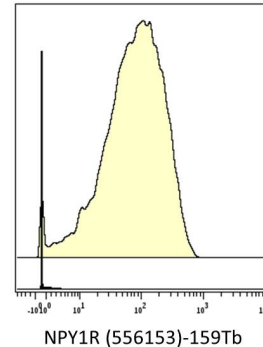
Isotype: IgG2b

Formulation: Antibody stabilizer with 0.05% Sodium Azide

## Technical Information

**Validation:** Each lot of conjugated antibody is quality control tested by CyTOF<sup>®</sup> analysis of stained cells using the appropriate positive and negative cell staining and/or activation controls.

**Recommended Usage:** The suggested use is 1 µl for up to 3 X 10<sup>6</sup> live cells in 100 µl. It is recommended that the antibody be titrated for optimal performance for each of the desired applications.



Human MCF7 cells (top) and human Jurkat cells (bottom) stained with 159Tb-anti-NPY1R (556153). Total viable cells are displayed in analysis.

## Description

Neuropeptide Y (NPY) and the closely related peptide YY (PYY) and pancreatic polypeptide (PP) are a family of 36-amino acid, tyrosine-rich peptides with amidated C-terminal ends that are involved in the control of a diverse set of behavioral process including appetite, circadian rhythm, and anxiety. There are five known mammalian neuropeptide Y receptors designated Y1 through Y5. Neuropeptide Y receptor type 1 (NPY1R) is a 44 kDa (unglycosylated) member of the G protein coupled receptor 1 family. Functionally, NPY1R is a receptor for neuropeptide Y and peptide YY. Y1 receptor deficient mice display a variety of physical and behavioral phenotypes including obesity, hyperinsulinemia, and increased territorial behavior.

## References

Bandura, D. R., et al. Mass Cytometry: Technique for Real Time Single Cell Multitarget Immunoassay Based on Inductively Coupled Plasma Time-of-Flight Mass Spectrometry. *Analytical Chemistry* 81:6813-6822, 2009.

Ornatsky, O. I., et al. **Highly Multiparametric Analysis by Mass Cytometry.** *J Immunol Methods* 361 (1-2):1-20, 2010.

### For technical support visit [fluidigm.com/support](http://fluidigm.com/support)

**North America** +1 650 266 6100 | Toll-free: +1 866 358 4354 in the US | [support.northamerica@fluidigm.com](mailto:support.northamerica@fluidigm.com) **Europe** +33 1 60 92 42 40 | [support.europe@fluidigm.com](mailto:support.europe@fluidigm.com)

**China (excluding Hong Kong)** +86 21 3255 8368 | [techsupportchina@fluidigm.com](mailto:techsupportchina@fluidigm.com) **Japan** +81 3 3662 2150 | [techsupportjapan@fluidigm.com](mailto:techsupportjapan@fluidigm.com)

**All other Asian countries** +1 650 266 6100 | [techsupportasia@fluidigm.com](mailto:techsupportasia@fluidigm.com) **Central and South America** +1 650 266 6100 | [techsupportlatam@fluidigm.com](mailto:techsupportlatam@fluidigm.com)

### For Research Use Only. Not for use in diagnostic procedures.

Information in this publication is subject to change without notice. **Safety data sheet information** [fluidigm.com/sds](http://fluidigm.com/sds) **Patent and license information** [fluidigm.com/legalnotices](http://fluidigm.com/legalnotices) | Fluidigm, the Fluidigm logo, and CyTOF are trademarks or registered trademarks of Fluidigm Corporation in the United States and/or other countries. © 2015 Fluidigm Corporation. All rights reserved. 07/2015