

# Anti-Human MIP-1 $\beta$ -160Gd

Catalog: 3160013B

Package size: 100 tests

Storage: Store product at 4 °C. Do not freeze.

Clone: D21-1351

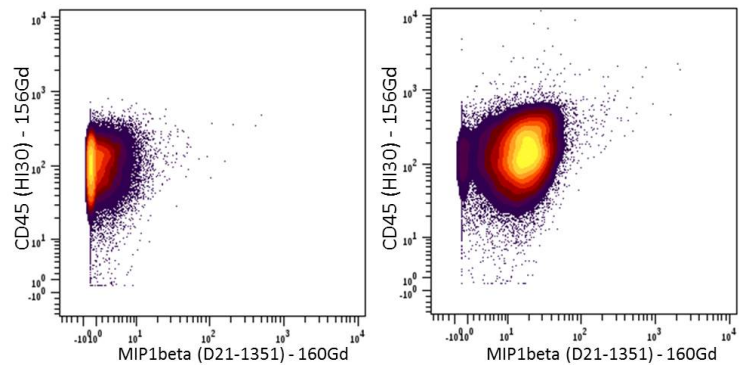
Isotype: Mouse IgG1

Formulation: Antibody stabilizer with 0.05% sodium azide

## Technical Information

**Validation:** Each lot of conjugated antibody is quality control-tested by CyTOF<sup>®</sup> analysis of stained cells using the appropriate positive and negative cell staining and/or activation controls.

**Recommended usage:** The suggested use is 1  $\mu$ L for up to 3  $\times 10^6$  live cells in 100  $\mu$ L. It is recommended that the antibody be titrated for optimal performance for each of the desired applications.



Human PBMCs were incubated for 5 hours in media alone (left) or with PMA and Ionomycin (right) in the presence of monensin and brefeldin A. Cells were then fixed, permeabilized and stained with 156Gd-anti-CD45 (HI30) and 160Gd-anti-MIP-1 $\beta$  (D21-1351).

## Description

Macrophage inflammatory protein-1 $\beta$  (MIP-1 $\beta$ ), also known as CCL4, is a cysteine-cysteine (CC) chemokine. It is a chemoattractant for natural killer cells, monocytes and a variety of other immune cells. Human MIP-1 $\beta$  shares ~75% homology with mouse MIP-1 $\beta$  and binds to receptors CCR5 and CCR8. The immunogen used to generate D21-1351 hybridoma was recombinant human MIP-1 $\beta$ .

## References

- Bandura, D. R., et al. Mass Cytometry: Technique for Real Time Single Cell Multitarget Immunoassay Based on Inductively Coupled Plasma Time-of-Flight Mass Spectrometry. *Analytical Chemistry* 81 (2009): 6,813–22.
- Ornatsky, O. I., et al. Highly Multiparametric Analysis by Mass Cytometry. *Journal of Immunological Methods* 361 (2010): 1–20.
- Newell, E.W., et al. Cytometry by Time-of-Flight Shows Combinatorial Cytokine Expression and Virus-Specific Cell Niches within a Continuum of CD8+ T Cell Phenotypes. *Immunity* 36 (2012): 142–52.

## For technical support visit [fluidigm.com/support](http://fluidigm.com/support).

**North America** +1 650 266 6100 | Toll-free: +1 866 358 4354 in the US | [support.northamerica@fluidigm.com](mailto:support.northamerica@fluidigm.com) **Europe** +33 1 60 92 42 40 | [support.europe@fluidigm.com](mailto:support.europe@fluidigm.com)  
**China (excluding Hong Kong)** +86 21 3255 8368 | [techsupportchina@fluidigm.com](mailto:techsupportchina@fluidigm.com) **Japan** +81 3 3662 2150 | [techsupportjapan@fluidigm.com](mailto:techsupportjapan@fluidigm.com)  
**All other Asian countries** +1 650 266 6100 | [techsupportasia@fluidigm.com](mailto:techsupportasia@fluidigm.com) **Central and South America** +1 650 266 6100 | [techsupportlatam@fluidigm.com](mailto:techsupportlatam@fluidigm.com)

## For Research Use Only. Not for use in diagnostic procedures.