

Anti-Human CD146-155Gd

Catalog: 3155006B

Package size: 100 tests

Storage: Store product at 4 °C. Do not freeze.

Cross-reactivity: Rabbit, Mouse, Canine

Clone: P1H12

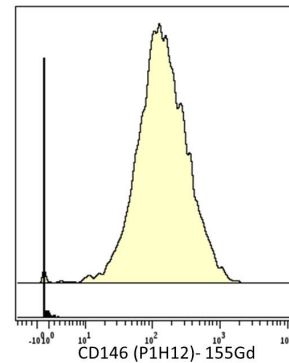
Isotype: Mouse IgG1

Formulation: Antibody stabilizer with 0.05% sodium azide

Technical Information

Validation: Each lot of conjugated antibody is quality control-tested by CyTOF® analysis of stained cells using the appropriate positive and negative cell staining and/or activation controls.

Recommended usage: The suggested use is 1 µL for up to 3 x 10⁶ live cells in 100 µL. It is recommended that the antibody be titrated for optimal performance for each of the desired applications.



Human Hela epithelial cells (top) and human Jurkat T cells (bottom) stained with 155Gd-anti-CD146 (P1H12).

Description

Monoclonal antibody P1H12 specifically reacts with CD146, also known as MUC18, S-Endo, MCAM and Mel-CAM (melanoma cell adhesion molecule). CD146 is a 118 kDa integral transmembrane glycoprotein in the immunoglobulin superfamily. CD146 is expressed on a variety of cell types including melanoma cells, epithelial cells, endothelial cells, fibroblasts, activated T cells, multipotent mesenchymal stromal cells and activated keratinocytes. CD146 has a currently unknown ligand and it has been reported to mediate heterophilic cell adhesion and regulates monocyte transendothelial migration.

References

Bandura, D. R., et al. Mass Cytometry: Technique for Real Time Single Cell Multitarget Immunoassay Based on Inductively Coupled Plasma Time-of-Flight Mass Spectrometry. *Analytical Chemistry* 81 (2009): 6,813–22.

Ornatsky, O. I., et al. Highly Multiparametric Analysis by Mass Cytometry. *Journal of Immunological Methods* 361 (2010): 1–20.

For technical support visit fluidigm.com/support.

North America +1 650 266 6100 | Toll-free: +1 866 358 4354 in the US | support.northamerica@fluidigm.com **Europe** +33 1 60 92 42 40 | support.europe@fluidigm.com

China (excluding Hong Kong) +86 21 3255 8368 | techsupportchina@fluidigm.com **Japan** +81 3 3662 2150 | techsupportjapan@fluidigm.com

All other Asian countries +1 650 266 6100 | techsupportasia@fluidigm.com **Central and South America** +1 650 266 6100 | techsupportlatam@fluidigm.com

For Research Use Only. Not for use in diagnostic procedures.

This product contains antibodies manufactured by and sold under license from BioLegend® and licensees thereof.

Information in this publication is subject to change without notice. **Safety data sheet information** www.fluidigm.com/sds **Patent and license information** www.fluidigm.com/legalnotices |

Fluidigm, the Fluidigm logo, and CyTOF are trademarks or registered trademarks of Fluidigm Corporation in the United States and/or other countries. © 2016 Fluidigm Corporation. All rights reserved.
11/2016